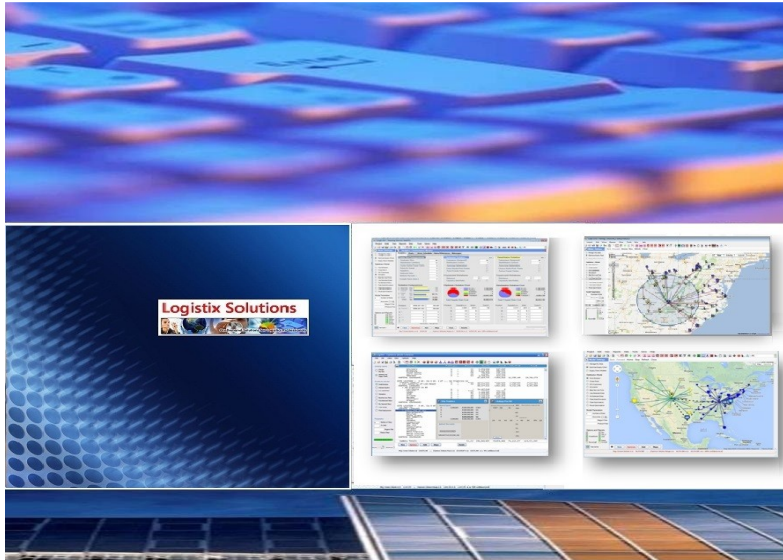


# Logix 5.0<sup>®</sup>

## New Features and Users in the News – June 2015



**Logix Solutions**  
On-Demand Solutions for Logistics Professionals

### *What's new at Logix Solutions*

*Logix 5.0<sup>®</sup> is used by start-ups as well as established enterprises in diverse industries around the world. What's common with all our users today is that they are pushing the boundaries and reaping benefits often well beyond the 20% goal they set as a minimum return on their investment.*

*Measuring these performance improvements is of the utmost importance for all our users. Logix makes this easy with ten new supply chain metrics to compare solutions and to track performance over time.*

*This month's New Users and Users in the News focuses on these unique capabilities and our rapid response to customization.*

*Robert Camozzo*

President  
Logix Solutions

# New Features and Users in the News – June 2015

## Pushing the Boundaries of Supply Chain Optimization

Many companies in diverse industries work with Logistix Solutions around the globe. A common theme with all our users today is that they are really **pushing the boundaries and using aggressive cost cutting strategies** like cross docking, backhauls, direct supplier shipments bypassing distribution networks, managing their own inbound freight and moving from less than truckload (LTL) to multi-stop truckload and other consolidated freight methods.

Formerly managed as one-off, manual processes, each of these strategies can pose a big challenge for supply chain optimization software. But the **benefits can also be bigger with significant savings, often well beyond the 20% goal companies set as a minimum ROI**. The reason these strategies are so difficult to automate is that they are often unique to each company and thus it is a challenge to design software algorithms that provide flexible solutions for a broad enough spectrum of users.

This often requires **greater customization or rapid-response, continuous improvement** which the new generation of on-demand software or "Software As A Service" is now more capable of providing. Yet, for all the complexity, software solutions must still be easy to set up and use.

**Logistix Solutions is committed to designing software with simpler user interfaces, cutting edge algorithms and faster solutions** in order to solve problems that are increasingly more complex, more challenging and, ultimately, much more profitable.

**Logix® Network Optimization and integrated Transportation Optimization** provide the following unique capabilities:

- Cross Dock Optimization
- DC-Bypass Supplier Direct Distribution
- Backhaul Optimization
- Carrier vs Private Fleet Optimization
- Inbound Freight Management
- Multi-stop Truckload vs LTL Optimization

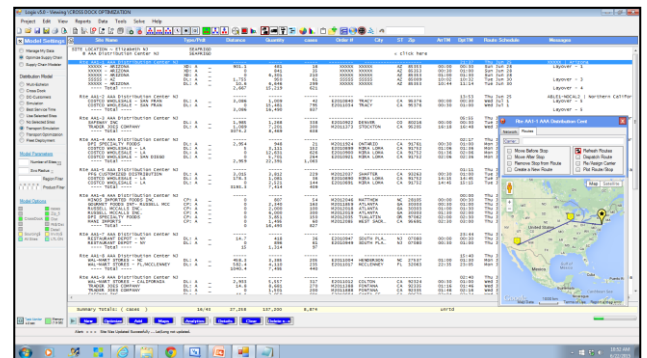


ONE OF LOGISTIX SOLUTIONS' OLDEST CUSTOMERS IS ONE OF THE LARGEST THIRD PARTY LOGISTICS PROVIDERS IN THE U.S. AND OVERSEAS.

THEIR SUPPLY CHAIN SOLUTIONS DIVISION OFTEN MODELS DISTRIBUTION SOLUTIONS THAT PROVIDE SIGNIFICANT ADVANTAGES FOR THEIR CUSTOMERS.

SOLUTIONS INCLUDE SUPPLIER DIRECT, MULTI-STOP TRUCKLOAD AND MODE OPTIMIZATION AS WELL AS TRADITIONAL NETWORK MODELING AND DISTRIBUTION FACILITY SELECTION.

CONTACT [INFO@LOGISTIXSOLUTIONS.COM](mailto:INFO@LOGISTIXSOLUTIONS.COM) OR 571-426-5951 FOR MORE INFORMATION.

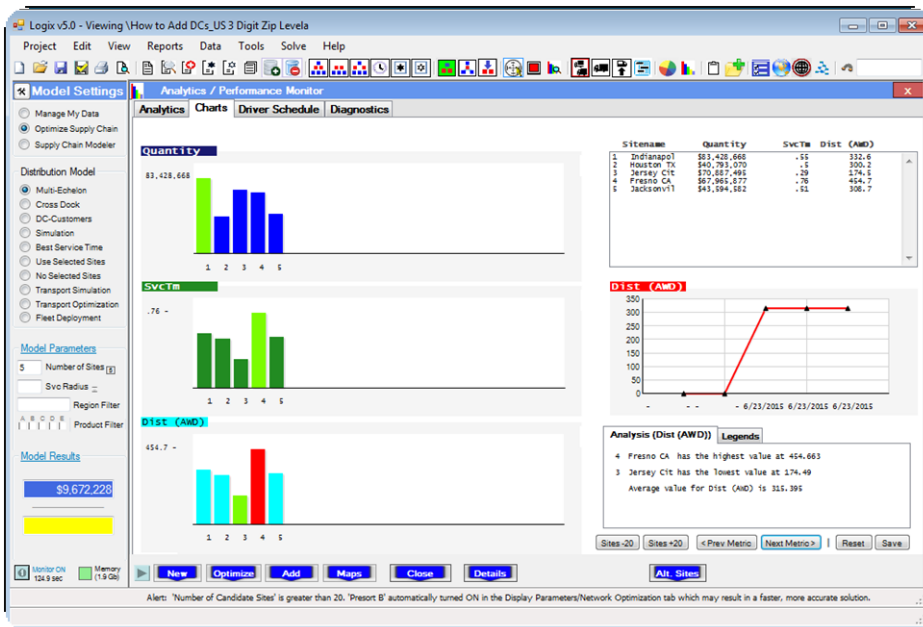


*Logix® Distribution Network Design Software and Transportation Optimization*

**Ten Key Metrics to Track Supply Chain Performance** – Logistix Solutions has added additional analytics and a new performance metrics screen to better compare optimization solutions and track long-term performance. Metrics are shown graphically and in tables for each facility in the distribution network making it easy to highlight areas of greatest opportunity and greatest risk.

New performance metrics in Logix 5.0 include:

- Total Cost (Total Solution and for each Distribution Facility)
- Total Demand (Quantity unit of measure used in transportation costing)
- Total Space Requirements (i.e., cases, pallets, square or cubic feet)
- Total Warehouse Utilization for each facility
- Cost per Quantity Unit (i.e., Cost per Pound or Cost per Hundred Weight)
- Cost per Space Unit (i.e., Cost per Pallet or Cost per Case)
- Transit Time (Total and for each Distribution Facility)
- Average Weighted Distance (Total and for each Distribution Facility)
- Service Level and Target Performance Level
- Carbon and Greenhouse Gas Emissions (for facilities and vehicles)



**Logix® New Analytics and Performance Metrics Display**

Logistix Solutions continues to work with individual customers to define additional performance metrics to report on and display

For more information on the Logistix Solutions suite of products, visit our website at [www.logistixsolutions.com](http://www.logistixsolutions.com) or contact Logistix Solutions at 571.426.5951 or e-mail [info@logistixsolutions.com](mailto:info@logistixsolutions.com).

## LOGISTIX SOLUTIONS – Technology for Logistics Professionals

*Logistix Solutions was established in 2006 as a software and consulting company to provide premier technology solutions and in-depth industry knowledge for logistics professionals. We offer award-winning, on-demand Supply Chain Planning and Execution applications at a revolutionary value for rapid ROI and benefit realization.*

- ✚ *Supply Chain Planning and Execution (SCP&E) software solutions offered:*
  - *Distribution Network Design and Supply Chain Optimization*
  - *Sourcing and Procurement Optimization*
  - *Transportation Optimization*
  - *Transportation Resource Scheduling and Execution*
- ✚ *Support, training and consulting services provided by experienced supply chain practitioners and logistics software experts.*

*Based on extensive development working with Fortune 1000 companies, Logistix Solutions provides full-featured, on-demand supply chain solutions and consulting services for commercial real estate services firms, retailers, manufacturers, third party logistics providers, consultants, food and beverage and other distributors to support strategic planning and logistics execution requirements.*

*Again this year, Logistix Solutions is proud to have won prestigious awards from Food Logistics, Supply Tech Magazine, Supply and Demand Chain Executive, Inbound Logistics and Supply Chain Brain.*

*For more information on these awards and publications, visit our website at [www.logistixsolutions.com/InTheNews](http://www.logistixsolutions.com/InTheNews).*



For more information on the Logistix Solutions suite of products, visit our website at [www.logistixsolutions.com](http://www.logistixsolutions.com) or contact Logistix Solutions at 571.426.5951 or e-mail [info@logistixsolutions.com](mailto:info@logistixsolutions.com).