



Logistix  
Solutions

## Logix<sup>®</sup> and ProLogix<sup>®</sup> – Supply Chain Optimization for Quick Analysis and for More Complex Solutions

---

May 2022

### In this edition ...

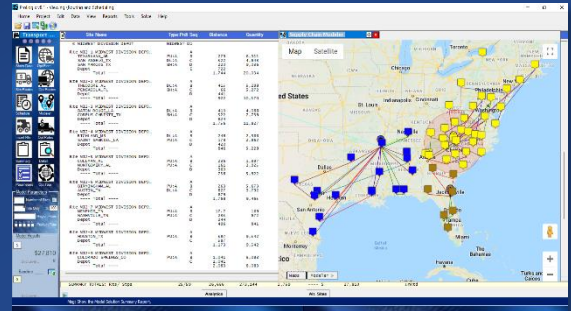
- Logix Design Center – Supply Chain Modeling and Transport Optimization for the Non-Technical User
- Inventory Optimization Revisited – Just in Time vs Just Enough
- Optimizing Using Minimum and Maximum - It's the Least We Could Do

## New Users in the News

A home goods distributor and new ProLogix user on the US East Coast recently acquired several companies and integrated distribution under their warehousing and delivery operations.

*Using the new minimum service radius and operating capacity capabilities, Logix determined the number of existing and newly acquired retail outlets that could be serviced from their one existing warehouse for an interim period at 90-95% capacity while opening one or at most two new distribution facilities to service the remaining outlets.*

Logix optimized distribution operations and generated integrated delivery routes while showing a pathway to future growth incorporating inventory levels and various mixes of direct supplier distribution and import and domestic supply.



## Logix or ProLogix for Ease of Use and for the Professional Analyst

*"Logistix Solutions has always tailored its software to be both Easy to Use and Full Featured in order to solve simple supply chain problems or the most complex scenarios. In 2020 with version 8.0, we introduced ProLogix in order to develop more complex solutions requiring a more professional level of analysis while maintaining the ease of use of the original Logix version at a lower price point. What we found is a fairly even mix of first time users choosing Logix vs ProLogix, and nearly all of our long-time Logix users opting for the greater flexibility and robust features in ProLogix."*

Robert Camozzo, President, Logistix Solutions.

### ProLogix for Supply Chain Modeling

- Service Level Optimization at the Distribution Center level
- Manufacturing Optimization at the SKU or Item level
- Warehouse and Cross Dock Optimization
- Distance/PC Miler Tables for even greater precision.



### ProLogix for Transport Optimization

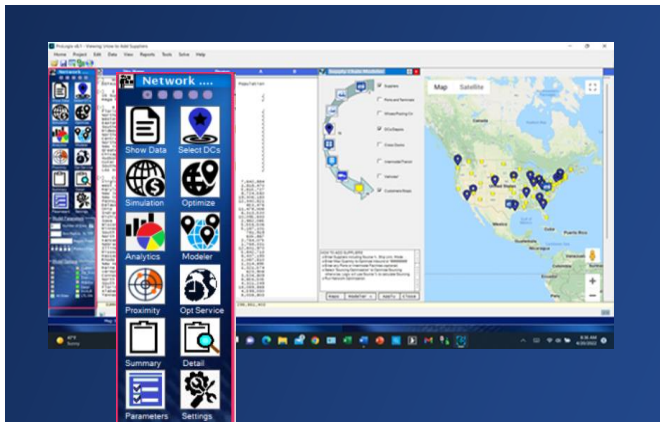
- Driving Directions and Distances using Google Maps
- Rate, Mode and Carrier Optimization
- Less Than Truckload vs Truckload Shipping Optimization
- Continuous Move Optimization for better fleet and driver utilization.
- Rush hour effects.



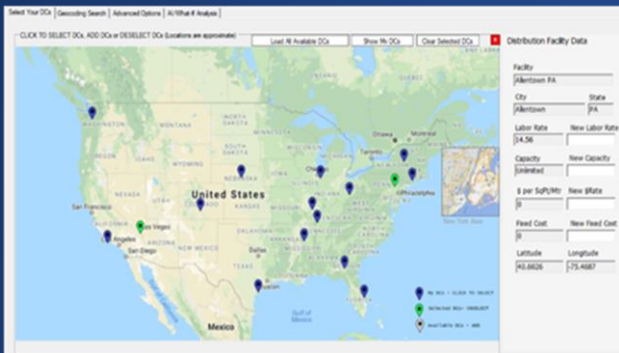
Logistix  
Solutions



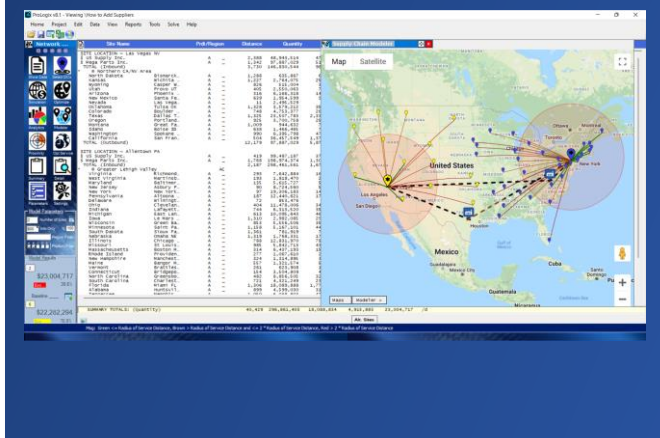
## Logix Design Center – Supply Chain Modeling and Transport Optimization for the Non-Technical User



*The Logix Design Center steps through the Supply Chain Optimization process.*



*With the new "Select DCs" design center option, users simply click to instantly optimize or change their supply chain and see what happens if ....*



Logix recently introduced several features for the occasional or less technical user through the new Logix Design Center. The Design Center itself is geared towards systematically guiding the user through the various steps in a supply chain project:

- o Data Creation, Validation and Import
- o Supply Chain Model Building
- o As-Is or Baseline Simulation
- o Supply Chain Scenario Optimization
- o Analysis and Scenario Comparison
- o Fine Tuning and Greenfield Analysis
- o Reporting, Graphics and Metrics
- o What-If Analysis and Future Proofing

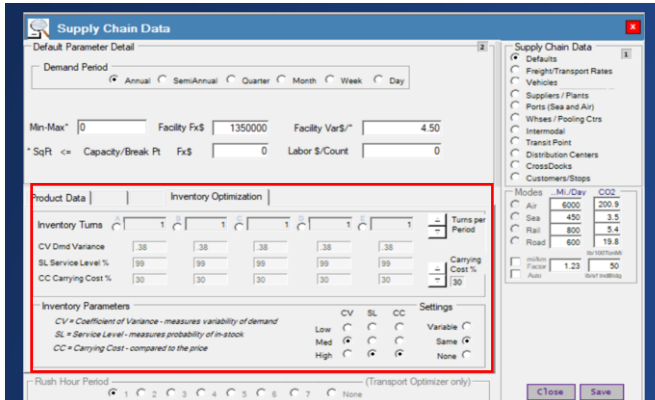
Logix users can generally acquire the data to support a project and create their first supply chain models in a few weeks and gradually fine tune their models for greater precision and complexity.

With the new features in ProLogix, users can model different service criteria for each distribution center, optimize service for different time windows (i.e., 2 hours, 4 hours, 8 hours), model cross docks and regional warehouses, optimize SKU level manufacturing scenarios and select the best carrier and LTL vs Truckload shipping option for their freight.

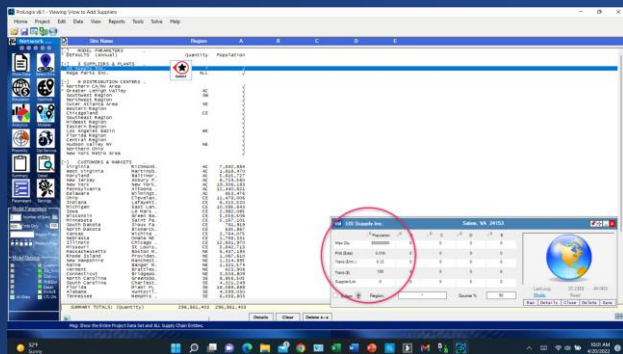
Contact [sales@logisticsolutions.com](mailto:sales@logisticsolutions.com) and ask for a demo or more information on Logix and ProLogix.



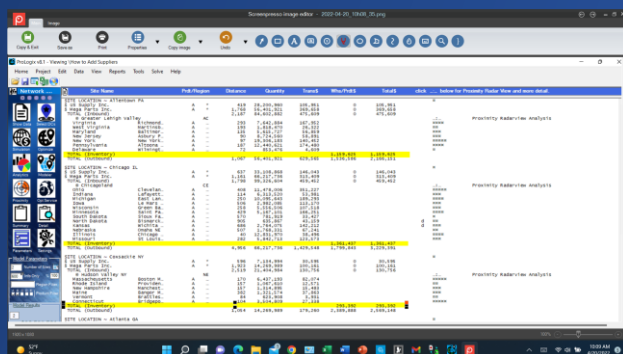
## Inventory Optimization Revisited – Just in Time vs Just Enough



Inventory Optimization in Logix starts with the Default Record/Inventory Optimization tab. Select high, medium or low demand variance, service level and carry cost percentage. Select “same” or “variable” across all product categories.



Provide pricing for each product or average pricing for each product category. Enter this in your supplier record for each supplier.



View inventory costs as part of your analysis for both baseline simulation and optimization results.

Inventory Optimization in Logix answers the question of “How much inventory should I maintain, and where should it be positioned improve service and reduce cost.” With the latest Supply Chain crisis supply shortages causing headaches for nearly everyone, Logix users are adding Inventory Optimization to their supply chain modeling and reporting.

Logix provides solutions for:

- o How does the number of stocking points affect inventory levels?
- o How much inventory should we stock?
- o What is the cost of inventory?
- o How do supplier pricing, changes in demand, product stockouts and supply volatility affect inventory levels?

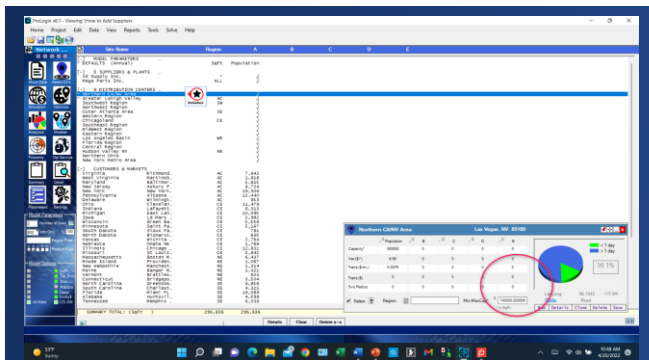
From an analysis prospective, users need to simply choose the level of demand volatility by product or product category (high, medium or low), the level of service required (high, medium or low), the carrying cost percentage for the various products and pricing for these products.

Logix then provides service as well as inventory optimization to help cut lead times, manage supply side volatility and improve supply chain resilience.

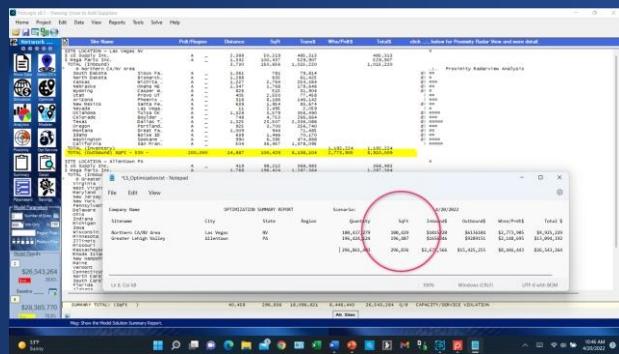
Contact [info@logistixsolutions.com](mailto:info@logistixsolutions.com) for more information and technical support.



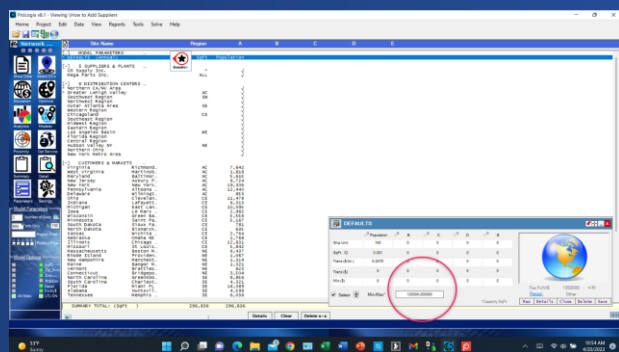
## Optimizing Using Minimum and Maximum Parameters in Logix



Set the Minimum and Maximum Capacity level for any Distribution Center in the Total Capacity field using the format Min-Max.



Make sure Capacity Limits is ON in the Display Parameters settings and optimize as usual. Logix will adhere to both Minimum and Maximum levels for any facility.



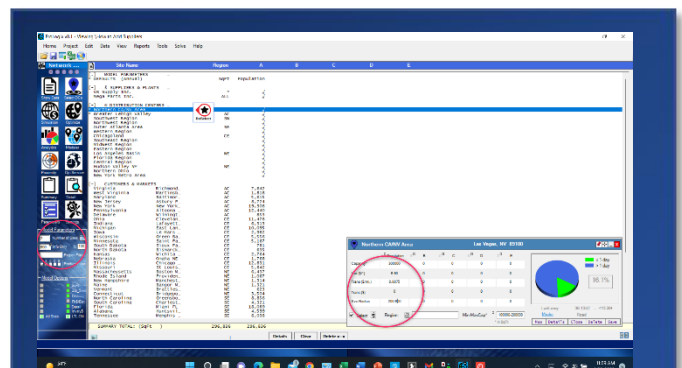
You can also set the Minimum and Maximum levels for any Greenfield site in the Default record.

Users have always had the ability to maximize the capacity of any distribution facility and report utilization, cap the service radius of any facility or set the minimum cost of any transport method in Logix .

In the latest version of Logix, users can also set:

- o Minimum size or capacity level for any distribution center or greenfield facility.
- o Minimum radius of service for each distribution center (defined for an individual Distribution Center and not overall).
- o Different Minimum Costs for LTL vs Truckload Freight Rate Calculations

Logix ensures that Distribution Centers are at least a certain size while also optimizing their number and/or location or set a minimum distance from a Distribution Center to a customer to be serviced by that DC.



Minimum Cost for LTL and Truckload in an LTL/TL record can be set in the same way.



## LOGISTIX SOLUTIONS – On-Demand Technology for Logistics Professionals

Logistix Solutions is a software and consulting company with premier technology solutions and in-depth industry knowledge for logistics professionals. We offer award-winning, on-demand Supply Chain Planning and Execution (SCP&E) applications for retailers, manufacturers, third party logistics providers, consultants, food and beverage and other distributors. We support strategic planning and logistics execution requirements at an affordable value for rapid ROI and benefit realization.

Based on extensive development working with Fortune 1000 companies, Logistix Solutions provides full-featured, on-demand supply chain solutions and consulting services for retailers, manufacturers, third party logistics providers, consultants, food and beverage and other distributors to support strategic planning and logistics execution requirements.

Supply Chain Planning and Execution software solutions offered:

- Distribution Network Design and Supply Chain Optimization
- Sourcing and Procurement Optimization
- Driver and Vehicle Scheduling
- Routing and Scheduling Fleet Optimization

Support, training and consulting services provided by experience supply chain practitioners and logistics software experts.

For more information on the Logistix Solutions suite of products, visit our website at [www.LogistixSolutions.com](http://www.LogistixSolutions.com)

or

contact Logistix Solutions at 571.426.5951

or

e-mail [info@LogistixSolutions.com](mailto:info@LogistixSolutions.com).

