

# Logix<sup>®</sup> Demo Presentation

---





---

To Get Started, Download the Free Logix  
Demo at [www.logistixsolutions.com](http://www.logistixsolutions.com)

# Welcome to Logix®

Logix® is a full-featured supply chain optimization, site location and distribution network modeling application that you can easily set up to quickly solve even your most complex supply chain problems.





# Welcome to Logix®

Logix® is a full-featured supply chain optimization, site location and distribution network modeling application that you can easily set up to quickly solve even your most complex supply chain problems.

Logistics professionals worldwide have generated more than \$500 million in savings and growing using Logix® across multiple industries.





# Welcome to Logix®

## Complete solutions *across the supply chain*

Logix® provides the most accurate and fastest solutions to supply chain problems ....

- **Optimize number and location of distribution centers** to minimize total supply chain costs
- **Improve lead time and customer service** to cut delivery times
- **Optimize loads, LTL / Truckload rates and carriers** to reduce shipping costs
- **Mitigate capacity overloads at DCs** by adding strategically located DCs or using more costly temporary storage.
- **Add new customers, new products and grow future volume** reduce risk and prepare for future network expansion.
- **Size, route and schedule fleet** to meet all customer, DOT and time requirements and cut delivery costs while improving service.



Logistix  
Solutions

# Welcome to Logix®

## Answers to *complex problems*

- Complex logistics problems require the latest technology to evaluate the astronomical number of alternatives for an optimum solution.
- Logix® ensures all product flows, transportation, warehousing and inventory costs and service implications are accurately represented in the optimum solution.
- The latest AI techniques use your data including current and future demand to design the most accurate picture of your operations.
- Typical savings using Logix® Supply Chain Optimization software range from 15-35%.



Typical savings

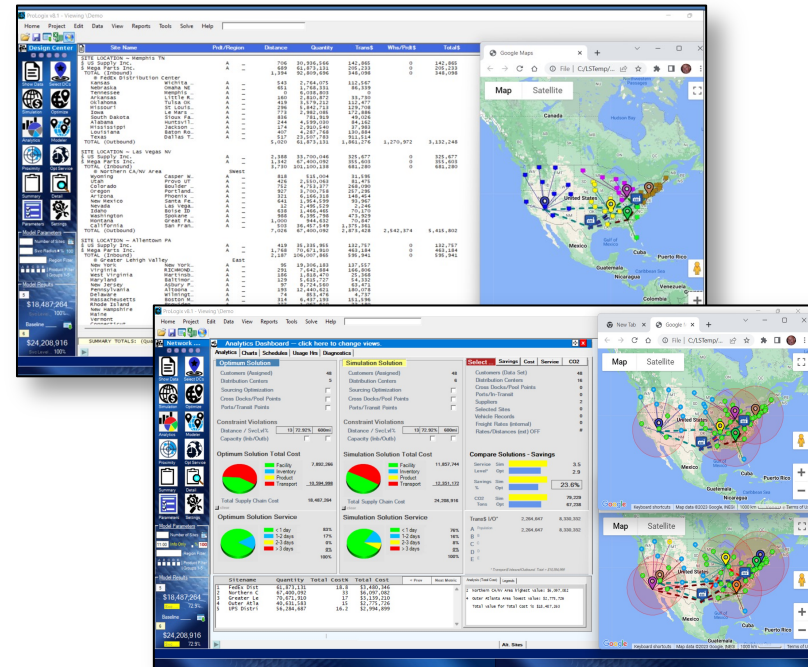


# Welcome to Logix®

## Strategic Planning *blueprint for success*

- Logix® builds a complete digital model of your distribution network operations using your data, your priorities, and your evaluation criteria.
- Data generally includes
  - current and future shipment volumes
  - transportation costs, freight rates, and modes of transport
  - weight, volume and cube parameters
  - facility capacities, cost and restrictions
  - suppliers and lead times.

AI modeling techniques ensure the model is robust and solutions are accurate.



Powerful optimization techniques and visuals provide a complete AI network design capability for logistics professionals



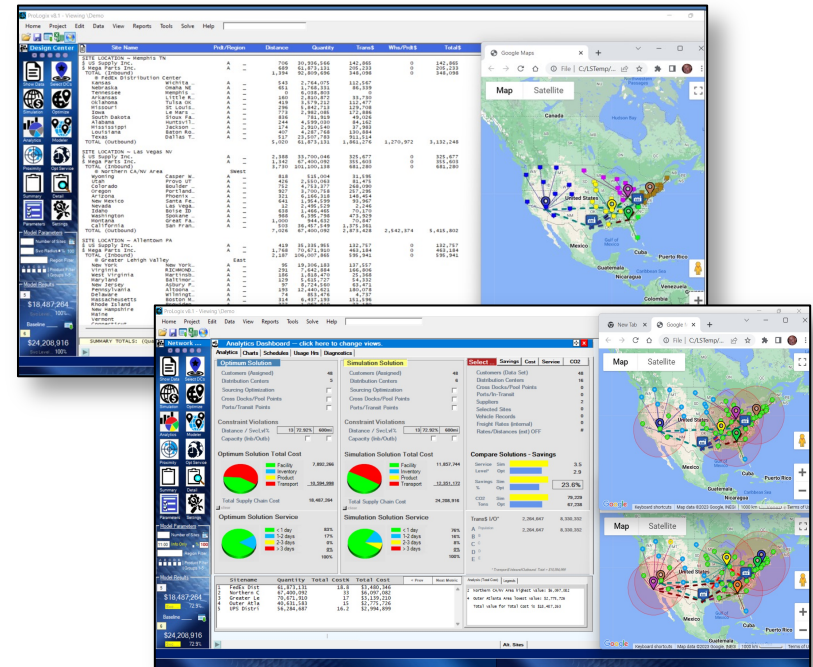
Logistix  
Solutions



# Welcome to Logix®

Continuously *improve*, or fall behind

- Build simulation and optimum models to try different scenarios and approaches instantly.
- Model future scenarios including new suppliers, product lines and customers.
- Replace off-lease facilities with more strategically located DCs.
- Optimize networks and DCs that have reached or exceeded capacities.
- Model the effect of future growth or different product mixes including e-commerce.
- Routinely optimize operations to keep up with changing demand, new products, acquisitions and supply chain disruptions.



Powerful optimization techniques and visuals provide a complete AI network design capability for logistics professionals

# Welcome to Logix®

ProLogix AI™ (c) Copyright 2024 Logistix Solutions LLC. Latest Update: May 31, 2024

Home Project Edit Data View Reports Tools Solve Help

## Getting Started



Demo



New  
Project



Current  
Project



Recent  
Projects



Logistix  
Solutions



Network Design



Transport Optimization

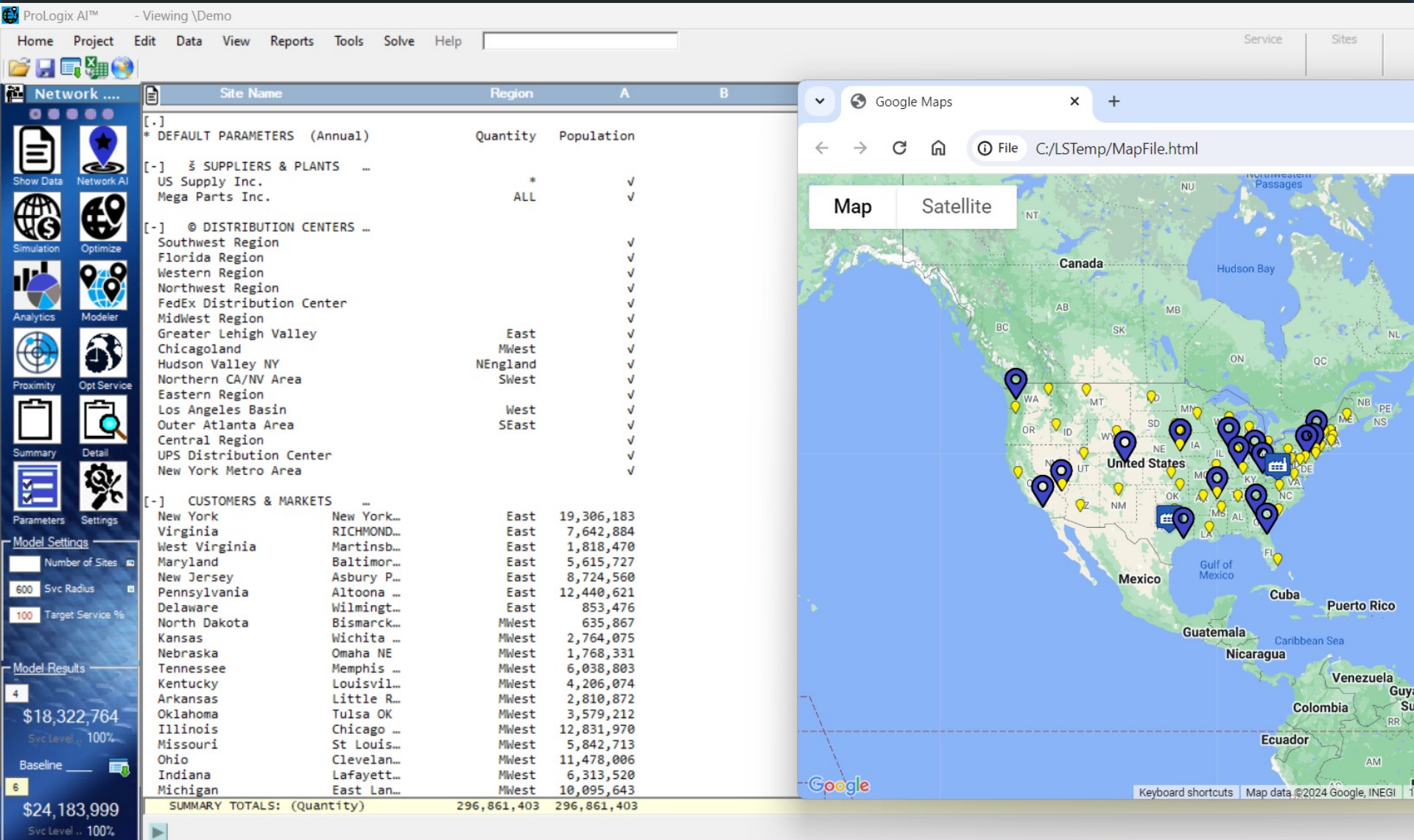


Consulting

Msg: PREDICTIVE ANALYTICS ON ... show comparative analysis of customer distribution costs and service level.



# Logix® Distribution Network Design





# Logix® Distribution Network Design

ProLogix AI™ - Viewing \Demo

Home Project Edit Data View Reports Tools Solve Help Search (Ctrl+F)

**Network ...**

Site Name Region A B C D E

[.] \* DEFAULT PARAMETERS (Annual) Quantity Population

[.] 3 SUPPLIERS & PLANTS ...

Site Name	Region	A	B	C	D	E
US Supply Inc.		*				✓
Mega Parts Inc.		ALL				✓

[.] @ DISTRIBUTION CENTERS ...

Site Name	Region	A	B	C	D	E
Eastern Region						✓
Southwest Region						✓
Florida Region						✓
Central Region						✓
New York Metro Area						✓
Western Region						✓
Northwest Region						✓
FedEx Distribution Center						✓
MidWest Region						✓
UPS Distribution Center						✓
Greater Lehigh Valley	East					✓
Chicagoland	MWest					✓
Hudson Valley NY	NEngland					✓
Outer Atlanta Area	SEast					✓
Northern CA/NV Area	SWest					✓
Los Angeles Basin	West					✓

[.] CUSTOMERS & MARKETS ...

Site Name	Region	A	B	C	D	E
New York	New York...	East	19,306,183			
Virginia	RICHMOND...	East	7,642,884			
West Virginia	Martinsb...	East	1,818,470			
Maryland	Baltimor...	East	5,615,727			
New Jersey	Asbury P...	East	8,724,560			
Pennsylvania	Altoona ...	East	12,440,621			
Delaware	Wilmington...	East	853,476			
North Dakota	Bismarck...	MWest	635,867			
Kansas	Wichita ...	MWest	2,764,075			
Nebraska	Omaha NE	MWest	1,768,331			
Tennessee	Memphis ...	MWest	6,038,803			
Kentucky	Louisvil...	MWest	4,206,074			
Arkansas	Little R...	MWest	2,810,872			
Oklahoma	Tulsa OK	MWest	3,579,212			
Illinois	Chicago ...	MWest	12,831,970			
Missouri	St Louis...	MWest	5,842,713			
Ohio	Cleveland...	MWest	11,478,006			
Indiana	Lafayett...	MWest	6,313,520			
Michigan	East Lan...	MWest	10,095,643			

SUMMARY TOTALS: (Quantity) 296,861,403 296,861,403

**Supply Chain Modeler**

Suppliers 2

Ports/Terminals

Whse/Pooling Ctr

DCs/Depots 16

Cross Docks

Intermodal/Transit

Vehicles

Customers/Stops 48

Model Settings

Number of Sites

Svc Radius

100 Target Service %

Model Options

Svc Level

Baseline

Svc Level

Maps Modeler > Refresh Close

Msg: Google Maps no longer supports Internet Explorer. Logix now supports Pop Up Maps using Chrome, MS Edge, Firefox and Safari as your default browser.



# Logix® Distribution Network Design

ProLogix AI™ - Viewing \Demo

Home Project Edit Data View Reports Tools Solve Help Search (Ctrl+F)

**Network ...**

Site Name Region A B C D E

[.] \* DEFAULT PARAMETERS (Annual) Quantity Population

[.] 3 SUPPLIERS & PLANTS ...

US Supply Inc. \* ✓

Mega Parts Inc. ALL ✓

[.] @ DISTRIBUTION CENTERS ...

Eastern Region ✓

Southwest Region ✓

Florida Region ✓

Central Region ✓

New York Metro Area ✓

Western Region ✓

Northwest Region ✓

FedEx Distribution Center ✓

MidWest Region ✓

UPS Distribution Center ✓

Greater Lehigh Valley East ✓

Chicagoland MWest ✓

Hudson Valley NY NEngland ✓

Outer Atlanta Area SEast ✓

Northern CA/NV Area SWest ✓

Los Angeles Basin West ✓

[.] CUSTOMERS & MARKETS ...

Customer	Region	Population
New York	East	19,306,183
Virginia	East	7,642,884
West Virginia	East	1,818,470
Maryland	East	5,615,727
New Jersey	East	8,724,560
Pennsylvania	East	12,440,621
Delaware	East	853,476
North Dakota	MWest	635,867
Kansas	MWest	2,764,075
Nebraska	MWest	1,768,331
Tennessee	MWest	6,038,803
Kentucky	MWest	4,206,074
Arkansas	MWest	2,810,872
Oklahoma	MWest	3,579,212
Illinois	MWest	12,831,970
Missouri	MWest	5,842,713
Ohio	MWest	11,478,006
Indiana	MWest	6,313,520
Michigan	MWest	10,095,643

SUMMARY TOTALS: (Quantity) 296,861,403 296,861,403

**Supply Chain Modeler**

Suppliers 2

Ports/Terminals

Whse/Pooling Ctr

DCs/Depots 16

Cross Docks

Intermodal/Transit

Vehicles

Customers/Stops 48

Model Settings

Number of Sites

Svc Radius

100 Target Service %

Model Options

Svc Level

Baseline

Svc Level

Maps Modeler > Refresh Close

Msg: Google Maps no longer supports Internet Explorer. Logix now supports Pop Up Maps using Chrome, MS Edge, Firefox and Safari as your default browser.





# Logix® Distribution Network Design

ProLogix AI™ - Viewing \Demo

Home Project Edit Data View Reports Tools Solve Help Search (Ctrl+F)

**Network ...**

Site Name Region A B C D E

[.] \* DEFAULT PARAMETERS (Annual) Quantity Population

[.] 3 SUPPLIERS & PLANTS ...

US Supply Inc. \* ✓

Mega Parts Inc. ALL ✓

[.] @ DISTRIBUTION CENTERS ...

Eastern Region ✓

Southwest Region ✓

Florida Region ✓

Central Region ✓

New York Metro Area ✓

Western Region ✓

Northwest Region ✓

FedEx Distribution Center ✓

MidWest Region ✓

UPS Distribution Center ✓

Greater Lehigh Valley East ✓

Chicagoland MWest ✓

Hudson Valley NY NEngland ✓

Outer Atlanta Area SEast ✓

Northern CA/NV Area SWest ✓

Los Angeles Basin West ✓

[.] CUSTOMERS & MARKETS ...

Customer	Region	Population
New York	East	19,306,183
Virginia	East	7,642,884
West Virginia	East	1,818,470
Maryland	East	5,615,727
New Jersey	East	8,724,560
Pennsylvania	East	12,440,621
Delaware	East	853,476
North Dakota	MWest	635,867
Kansas	MWest	2,764,075
Nebraska	MWest	1,768,331
Tennessee	MWest	6,038,803
Kentucky	MWest	4,206,074
Arkansas	MWest	2,810,872
Oklahoma	MWest	3,579,212
Illinois	MWest	12,831,970
Missouri	MWest	5,842,713
Ohio	MWest	11,478,006
Indiana	MWest	6,313,520
Michigan	MWest	10,095,643

SUMMARY TOTALS: (Quantity) 296,861,403 296,861,403

**Supply Chain Modeler**

Suppliers 2

Ports/Terminals

Whse/Pooling Ctr

DCs/Depots 16

Cross Docks

Intermodal/Transit

Vehicles

Customers/Stops 48

Model Settings

Number of Sites 10

Svc Radius

100 Target Service %

Model Options

0

Svc Level

Baseline

0

Svc Level

Maps Modeler > Refresh Close

Msg: Google Maps no longer supports Internet Explorer. Logix now supports Pop Up Maps using Chrome, MS Edge, Firefox and Safari as your default browser.





# Logix® Distribution Network Design

ProLogix AI™ - Viewing \Demo

Home Project Edit Data View Reports Tools Solve Help Search (Ctrl+F)

Network ...

Site Name Region A B C D E

[.] \* DEFAULT PARAMETERS (Annual) Quantity Population

[.] 3 SUPPLIERS & PLANTS ...

US Supply Inc. \* ✓

Mega Parts Inc. ALL ✓

[.] @ DISTRIBUTION CENTERS ...

Eastern Region ✓

Southwest Region ✓

Florida Region ✓

Central Region ✓

New York Metro Area ✓

Western Region ✓

Northwest Region ✓

FedEx Distribution Center ✓

MidWest Region ✓

UPS Distribution Center ✓

Greater Lehigh Valley East ✓

Chicagoland MWest ✓

Hudson Valley NY NEngland ✓

Outer Atlanta Area SEast ✓

Northern CA/NV Area SWest ✓

Los Angeles Basin West ✓

[.] CUSTOMERS & MARKETS ...

New York New York... East 19,306,183

Virginia RICHMOND... East 7,642,884

West Virginia Martinsb... East 1,818,470

Maryland Baltimor... East 5,615,727

New Jersey Asbury P... East 8,724,560

Pennsylvania Altoona ... East 12,440,621

Delaware Wilmingt... East 853,476

North Dakota Bismarck... MWest 635,867

Kansas Wichita ... MWest 2,764,075

Nebraska Omaha NE MWest 1,768,331

Tennessee Memphis ... MWest 6,038,803

Kentucky Louisvil... MWest 4,206,074

Arkansas Little R... MWest 2,810,872

Oklahoma Tulsa OK MWest 3,579,212

Illinois Chicago ... MWest 12,831,970

Missouri St Louis... MWest 5,842,713

Ohio Clevelan... MWest 11,478,006

Indiana Lafayett... MWest 6,313,520

Michigan East Lan... MWest 10,095,643

SUMMARY TOTALS: (Quantity) 296,861,403 296,861,403

Supply Chain Modeler

Suppliers 2

Ports/Terminals

Whse/Pooling Ctr

DCs/Depots 16

Cross Docks

Intermodal/Transit

Vehicles

Customers/Stops 48

Model Settings

Number of Sites 10

Svc Radius

100 Target Service %

Model Options

0

Svc Level

Baseline

0

Svc Level

Msg: Google Maps no longer supports Internet Explorer. Logix now supports Pop Up Maps using Chrome, MS Edge, Firefox and Safari as your default browser.



# Logix® Distribution Network Design

ProLogix AI™ - Viewing \Demo

Home Project Edit Data View Reports Tools Solve Help Search (Ctrl+F)

Network ...

Site Name Region A B C D E

[.] \* DEFAULT PARAMETERS (Annual) Quantity Population

[.] 3 SUPPLIERS & PLANTS ...

US Supply Inc. \* ✓

Mega Parts Inc. ALL ✓

[.] @ DISTRIBUTION CENTERS ...

Eastern Region ✓

Southwest Region ✓

Florida Region ✓

Central Region ✓

New York Metro Area ✓

Western Region ✓

Northwest Region ✓

FedEx Distribution Center ✓

MidWest Region ✓

UPS Distribution Center ✓

Greater Lehigh Valley East ✓

Chicagoland MWest ✓

Hudson Valley NY NEngland ✓

Outer Atlanta Area SEast ✓

Northern CA/NV Area SWest ✓

Los Angeles Basin West ✓

[.] CUSTOMERS & MARKETS ...

New York New York... East 19,306,183

Virginia RICHMOND... East 7,642,884

West Virginia Martinsb... East 1,818,470

Maryland Baltimor... East 5,615,727

New Jersey Asbury P... East 8,724,560

Pennsylvania Altoona ... East 12,440,621

Delaware Wilmingt... East 853,476

North Dakota Bismarck... MWest 635,867

Kansas Wichita ... MWest 2,764,075

Nebraska Omaha NE MWest 1,768,331

Tennessee Memphis ... MWest 6,038,803

Kentucky Louisvil... MWest 4,206,074

Arkansas Little R... MWest 2,810,872

Oklahoma Tulsa OK MWest 3,579,212

Illinois Chicago ... MWest 12,831,970

Missouri St Louis... MWest 5,842,713

Ohio Clevelan... MWest 11,478,006

Indiana Lafayett... MWest 6,313,520

Michigan East Lan... MWest 10,095,643

SUMMARY TOTALS: (Quantity) 296,861,403 296,861,403

Model Settings

Number of Sites 10

Svc Radius 100

Target Service % 100

Model Options

Svc Level 0

Baseline 0

Svc Level 0

Supply Chain Modeler

Suppliers 2

Ports/Terminals

Whse/Pooling Ctr

DCs/Depots 16

Cross Docks

Intermodal/Transit

Vehicles

Customers/Stops 48

Maps Modeler > Refresh Close

Msg: Google Maps no longer supports Internet Explorer. Logix now supports Pop Up Maps using Chrome, MS Edge, Firefox and Safari as your default browser.





# Logix® Distribution Network Design

ProLogix AI™ - Viewing \Demo

Home Project Edit Data View Reports Tools Solve Help Search (Ctrl+F)

Network ...

Site Name Region A B

[.] \* DEFAULT PARAMETERS (Annual) Quantity Population

[.] 3 SUPPLIERS & PLANTS ...

US Supply Inc. \* ✓

Mega Parts Inc. ALL ✓

[.] 0 DISTRIBUTION CENTERS ...

Eastern Region ✓

Southwest Region ✓

Florida Region ✓

Central Region ✓

New York Metro Area ✓

Western Region ✓

Northwest Region ✓

FedEx Distribution Center ✓

MidWest Region ✓

UPS Distribution Center ✓

Greater Lehigh Valley ✓

Chicagoand East ✓

Hudson Valley NY MWest ✓

Outer Atlanta Area SEast ✓

Northern CA/NV Area SWest ✓

Los Angeles Basin West ✓

[.] CUSTOMERS & MARKETS ...

New York New York... East 19,306,183

Virginia RICHMOND... East 7,642,884

West Virginia Martinsb... East 1,818,470

Maryland Baltimor... East 5,615,727

New Jersey Asbury P... East 8,724,560

Pennsylvania Altoona ... East 12,440,621

Delaware Wilmingt... East 853,476

North Dakota Bismarck... MWest 635,867

Kansas Wichita ... MWest 2,764,075

Nebraska Omaha NE MWest 1,768,331

Tennessee Memphis ... MWest 6,038,803

Kentucky Louisvil... MWest 4,206,074

Arkansas Little R... MWest 2,810,872

Oklahoma Tulsa OK MWest 3,579,212

Illinois Chicago ... MWest 12,831,970

Missouri St Louis... MWest 5,842,713

Ohio Clevelan... MWest 11,478,006

Indiana Lafayett... MWest 6,313,520

Michigan East Lan... MWest 10,095,643

SUMMARY TOTALS: (Quantity) 296,861,403 296,861,403

Details

Google Maps

C:/LSTemp/MapFile.html

Chicagoand

Chicago, IL 60431

26.2% Service

Capacity\* 300000

Var (\$/mi) 4.90

Trans (\$/mi.) 0.0075

Lat/Long: 41.4824 -88.0791

Mode: Road

Select Region: MWest Min-MaxCap\* 300000

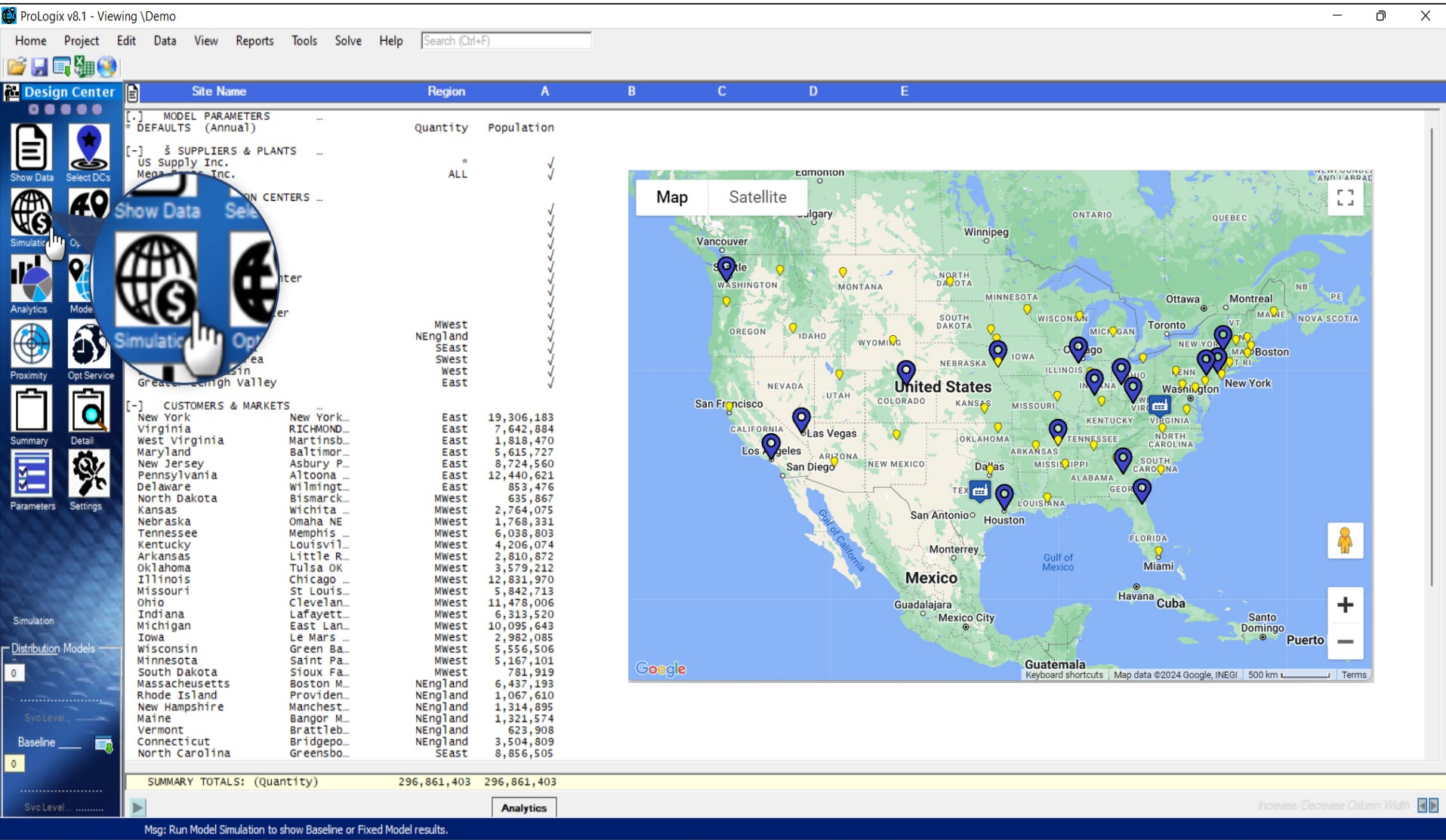
Map Details Close Delete Save

Msg: TASK MONITOR is currently OFF ... Click TASK MONITOR Icon to turn Task Monitor ON.

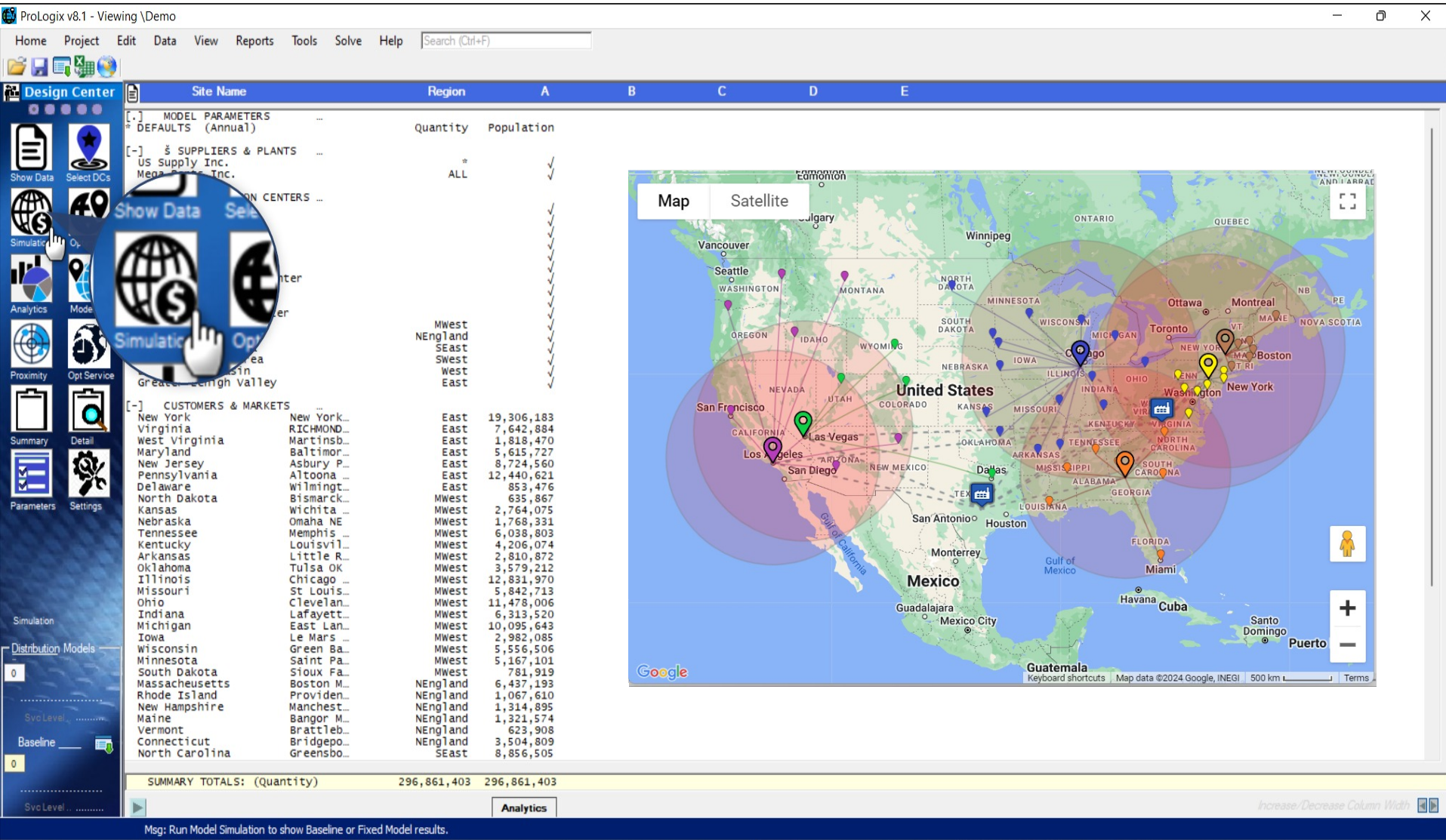




# Logix® Distribution Network Design



# Logix® Distribution Network Design





# Logix® Distribution Network Design

ProLogix v8.1 - Viewing \Demo

Home Project Edit Data View Reports Tools Solve Help Search (Ctrl+F)

**Design Center**

Site Name Prdt/Region Distance Quantity Trans\$ Whs/Prdt\$ Total\$ click ... below for Proximity Radar View and more detail.

**SITE LOCATION ~ Allentown PA**

Site Name	Prdt/Region	Distance	Quantity	Trans\$	Whs/Prdt\$	Total\$
\$ US Supply Inc.	A *	419	28,200,960	105,951	0	105,951
\$ Mega Parts Inc.	A *	1,768	56,401,921	369,658	0	369,658
<b>TOTAL (Inbound)</b>		<b>2,187</b>	<b>84,602,882</b>	<b>475,609</b>	<b>0</b>	<b>475,609</b>
<b>@ Greater Lehigh Valley East</b>						
New York	A ...	95	19,306,183	137,557		
Virginia	A ...	291	7,642,884	166,806		
West Virginia	A ...	186	1,818,470	25,368		
Maryland	A ...	129	5,615,727	54,332		
New Jersey	A ...	97	8,724,560	63,471		
Pennsylvania	A ...	193	12,440,621	180,078		
Delaware	A ...	74	853,476	4,737		
<b>TOTAL (Outbound)</b>		<b>1,064</b>	<b>56,401,921</b>	<b>632,349</b>	<b>1,536,586</b>	<b>2,168,935</b>

**SITE LOCATION ~ Chicago IL**

Site Name	Prdt/Region	Distance	Quantity	Trans\$	Whs/Prdt\$	Total\$
\$ US Supply Inc.	A *	637	41,426,348	182,732	0	182,732
\$ Mega Parts Inc.	A *	1,161	82,852,697	392,142	0	392,142
<b>TOTAL (Inbound)</b>		<b>1,798</b>	<b>124,279,046</b>	<b>574,873</b>	<b>0</b>	<b>574,873</b>
<b>@ Chicagoland MWest</b>						
North Dakota	A ...	894	635,867	42,635		
Kansas	A ...	686	2,764,075	142,212		
Nebraska	A ...	501	1,768,331	66,445		
Tennessee	A ...	554	6,038,803	250,912		
Kentucky	A ...	313	4,206,074	98,738		
Arkansas	A ...	638	2,810,872	134,500		
Oklahoma	A ...	692	3,579,212	185,761		
Illinois	A ...	44	12,831,970	42,346		
Missouri	A ...	279	5,842,713	122,259		
Ohio	A ...	406	11,478,006	349,505		
Indiana	A ...	118	6,313,520	55,875		
Michigan	A ...	268	10,095,643	202,922		
Iowa	A ...	525	2,982,085	117,420		
Wisconsin	A ...	258	5,556,506	107,518		
Minnesota	A ...	428	5,167,101	165,864		
South Dakota	A ...	568	781,919	33,310		
<b>TOTAL (Outbound)</b>		<b>7,172</b>	<b>82,852,697</b>	<b>2,118,222</b>	<b>1,882,706</b>	<b>4,000,928</b>

**SITE LOCATION ~ Coxsackie NY**

Site Name	Prdt/Region	Distance	Quantity	Trans\$	Whs/Prdt\$	Total\$
\$ US Supply Inc.	A *	596	7,134,994	30,595	0	30,595
\$ Mega Parts Inc.	A *	1,923	14,269,989	100,161	0	100,161
<b>TOTAL (Inbound)</b>		<b>2,519</b>	<b>21,404,984</b>	<b>130,756</b>	<b>0</b>	<b>130,756</b>
<b>@ Hudson Valley NY NEngland</b>						
Massachusetts	A ...	170	6,437,193	82,074		
Rhode Island	A ...	157	1,067,610	12,571		
New Hampshire	A ...	155	1,314,895	15,286		
Maine	A ...	373	1,321,574	36,971		
Vermont	A ...	85	623,908	3,977		
Connecticut	A ...	107	3,504,809	28,126		
<b>TOTAL (Outbound)</b>		<b>1,047</b>	<b>14,269,989</b>	<b>179,005</b>	<b>2,389,888</b>	<b>2,568,893</b>

**SITE LOCATION ~ Atlanta GA**

Site Name	Prdt/Region	Distance	Quantity	Trans\$	Whs/Prdt\$	Total\$
\$ US Supply Inc.	A *	448	26,214,460	100,768	0	100,768
\$ Mega Parts Inc.	A *	1,044	52,428,921	229,744	0	229,744
<b>TOTAL (Inbound)</b>		<b>1,492</b>	<b>78,643,382</b>	<b>330,512</b>	<b>0</b>	<b>330,512</b>
<b>@ Outer Atlanta Area SEast</b>						

**SUMMARY TOTALS: (Quantity)** 37,373 296,861,403 12,351,171 11,857,744 24,208,916

**\$24,208,916**

Svc Level: 100%

Analytics

Msg: Run Model Simulation to show Baseline or Fixed Model results.





# Logix® Distribution Network Design

ProLogix v8.1 - Viewing \Demo

Home Project Edit Data View Reports Tools Solve Help

Network ...

Site Name Region A B C D E

MODEL PARAMETERS  
\* DEFAULTS (Annual) Quantity Population

SUPPLIERS & PLANTS  
US Supply Inc.  
Mega Parts

Customers & Markets

Summary Detail

Model Parameters

Model Options

SUMMARY TOTALS: (Quantity) 296,861,403 296,861,403

Msg: Run Logix Supply Chain Optimization for Optimum Cost and Service Level.

Map Satellite

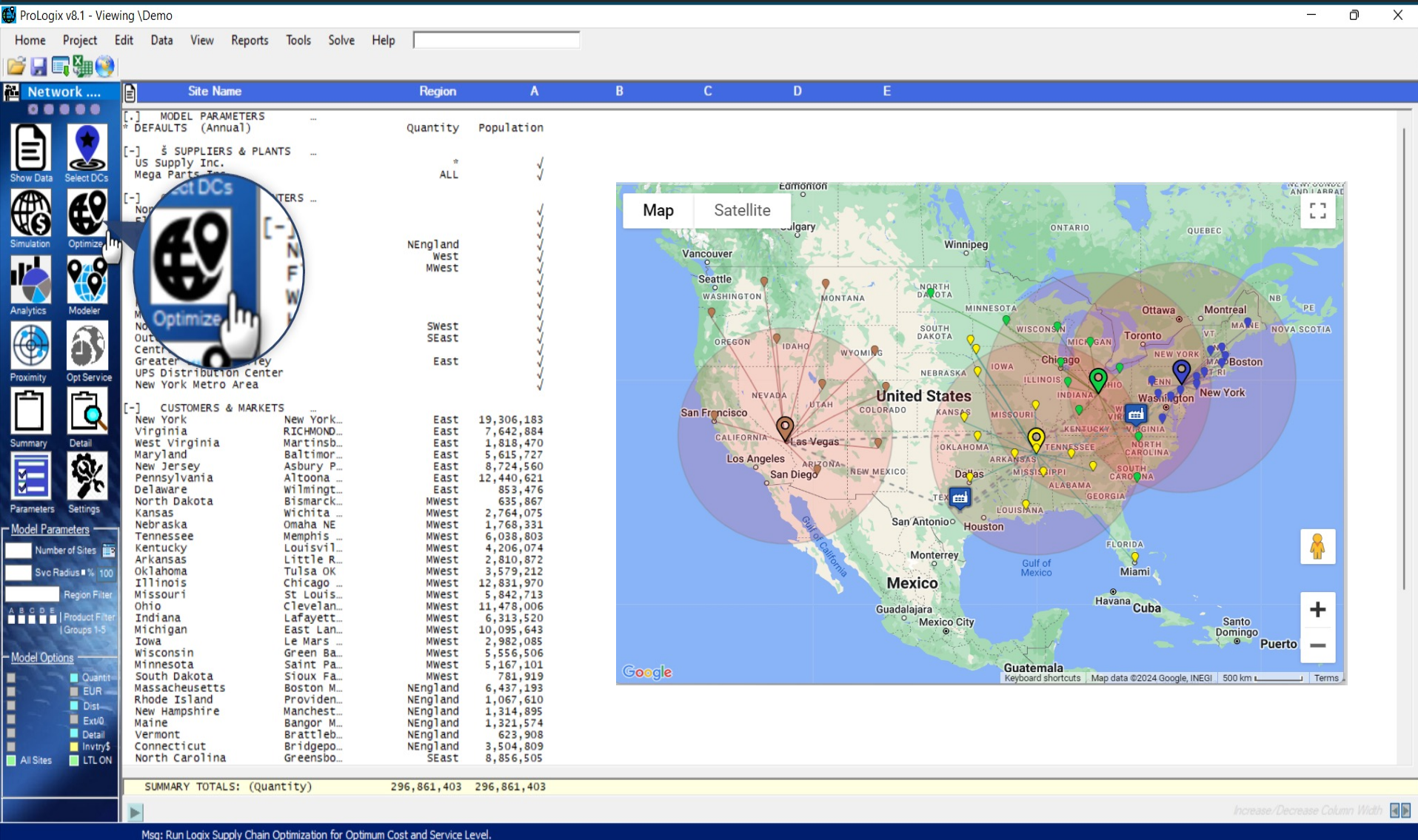
United States

Mexico

Guatemala

Logistix Solutions

# Logix® Distribution Network Design





# Logix® Distribution Network Design

ProLogix AI™ - Viewing \Demo

Home Project Edit Data View Reports Tools Solve Help Search (Ctrl+F)

Service: 100% Sites: 4 Solution Value: \$18,322,764 Savings: 24.2%

Network ...

Site Name Prdt/Region Tm(d/hrs) Quantity Trans\$ Whse/Prdt\$ Total\$ click ... below.

SITE LOCATION ~ Memphis TN

Site Name	Prdt/Region	Tm(d/hrs)	Quantity	Trans\$	Whse/Prdt\$	Total\$
US Supply Inc.	A	1.7	44,663,480	206,256	0	206,256
Mega Parts Inc.	A	1.6	89,326,960	296,298	0	296,298
TOTAL (Inbound)		0	133,990,440	502,553	0	502,553

Proximity Analysis

City	State	Tm(d/hrs)	Quantity	Trans\$	Whse/Prdt\$	Total\$
Kansas	Wichita	09:57	2,764,075	112,567		
Nebraska	Omaha NE	1'00:56	1,768,331	86,339		
Tennessee	Memphis	00:00	6,038,803	0		
Arkansas	Little R...	02:56	2,810,872	33,730		
Oklahoma	Tulsa OK	07:41	3,579,212	112,477		
Missouri	St Louis...	05:26	5,842,713	129,708		
Iowa	Le Mars	1'03:10	2,982,085	172,886		
South Dakota	Sioux Fa...	1'04:20	781,919	49,026		
Georgia	Atlanta	07:35	9,363,941	290,750		
Florida	Miami FL	1'08:41	18,089,888	1,457,140		

LS\_Optimization.txt

File Edit View

DEMO EXAMPLE OPTIMIZATION SUMMARY REPORT Scenario: 6/3/2024

SUPPLIERS ...	City	State	Quantity	SqFt	Inbound\$	Outbound\$	whse/Prdt\$	Total \$
US supply Inc.	Salem	VA	148,430,702	89,319	\$502,553	\$3,609,166	\$1,362,616	\$5,474,335
Mega Parts Inc.	Austin	TX	296,861,403	296,836	\$595,941	\$944,317	\$1,593,855	\$3,134,113
TOTAL (Inbound)			445,292,105	445,292,105				

DISTRIBUTION CENTERS ...

City	State	DelTm	Quantity	SqFt	Inbound\$	Outbound\$	whse/Prdt\$	Total \$
FedEx Distribution Center	Memphis	TN	89,326,960	89,319	\$502,553	\$3,609,166	\$1,362,616	\$5,474,335
Greater Lehigh valley	Allentown	PA	70,671,910	70,664	\$595,941	\$944,317	\$1,593,855	\$3,134,113
Northern CA/NV Area	Las Vegas	NV	67,400,092	67,395	\$681,280	\$2,873,428	\$2,535,026	\$6,089,734
UPS Distribution Center	Springfield	OH	69,462,441	69,458	\$472,900	\$1,858,577	\$1,293,103	\$3,624,580

SERVICE LEVEL ...

Average	A	B	C	D	E
Lead time (days):	.7	0.7	0	0	0
Average weighted distance (AWD) mi.:	600 mi.	417	0	0	0
Delivery time chart:	0 > 9999999mi	82% < 1 D	18% 1-2 D	0% 2-3 D	0% > 3 D
Violations:	100%				
Service %:					

Ln 27, Col 77 2,273 characters

100% Windows (CRLF) UTF-8 with BOM

SITE LOCATION ~ Memphis TN

Site Name	Prdt/Region	Tm(d/hrs)	Quantity	Trans\$	Whse/Prdt\$	Total\$
US Supply Inc.	A	4.5	33,700,046	325,677	0	325,677
Mega Parts Inc.	A	2.7	67,400,092	355,603	0	355,603

SUMMARY TOTALS: (Quantity) 296,861,403 11,538,164 6,784,600 18,322,764

Alt. Sites

\$18,322,764

Svc Level: 100%

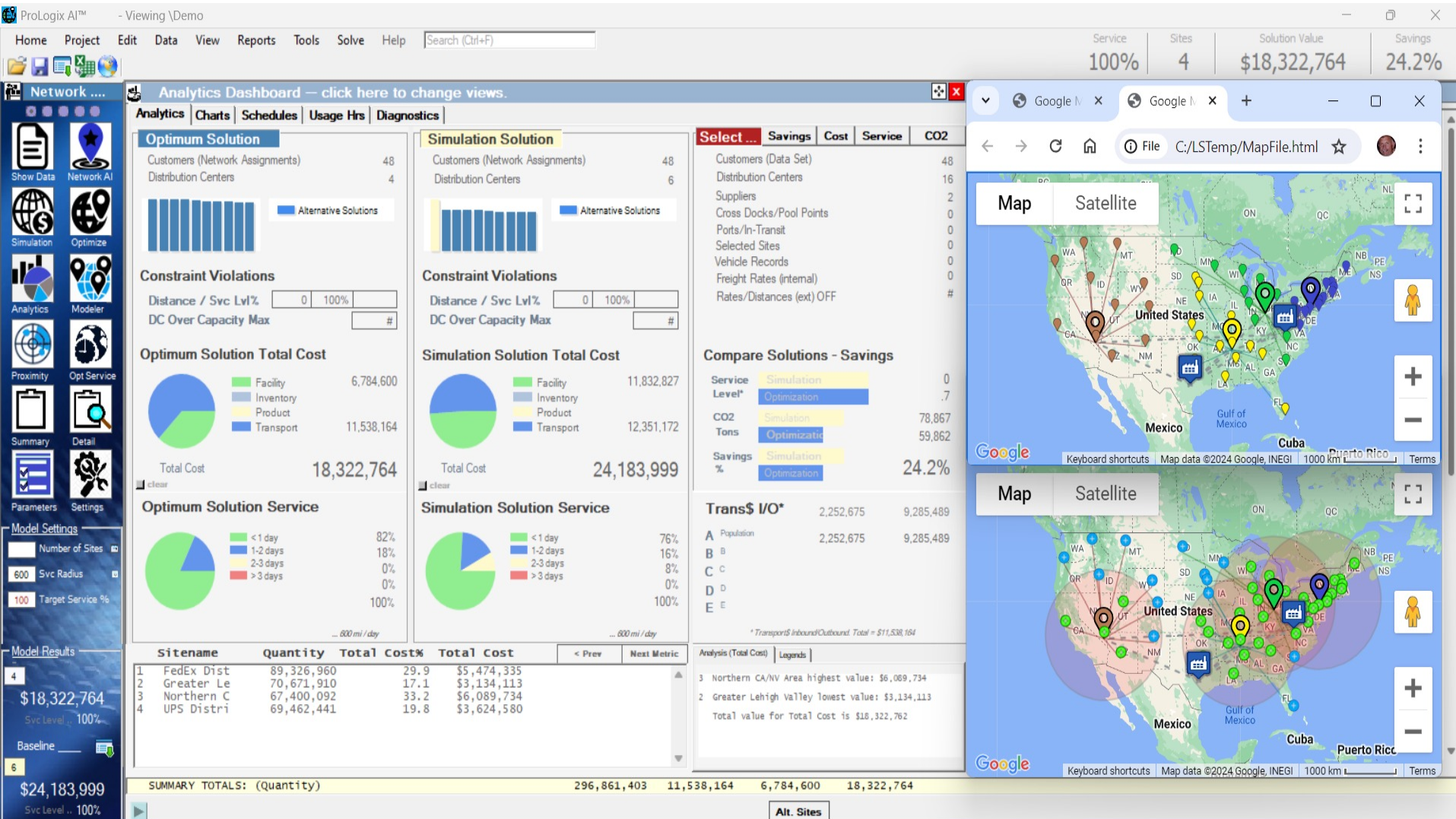
\$24,183,999

Svc Level: 100%

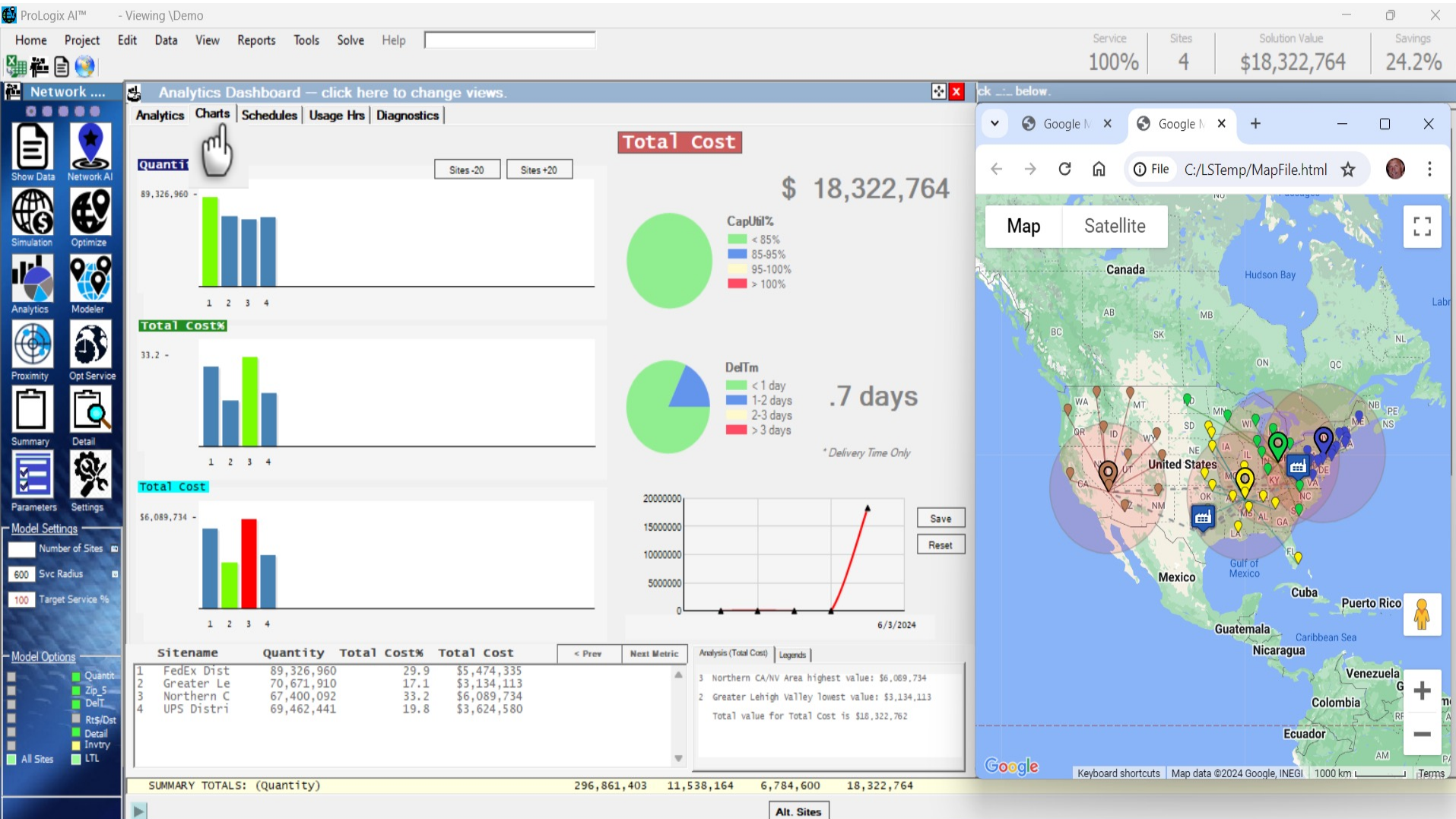




# Logix® Distribution Network Design



# Logix® Distribution Network Design





# Logix® Distribution Network Design

ProLogix AI™ - Viewing \Demo

Home Project Edit Data View Reports Tools Solve Help

Service 100% Sites 4 Solution Value \$18,322,764 Savings 24.2%

Site Name	Prdt/Region	Tm(d/hrs)	Quantity	Trans\$	Whs/Prdt\$	Total\$
SITE LOCATION ~ Memphis TN						
§ US Supply Inc.	A	1.7	44,663,480	206,256		
§ Mega Parts Inc.	A	1.6	89,326,960	296,298		
TOTAL (Inbound)		0	133,990,440	502,553		
© FedEx Distribution Center						
Kansas	Wichita ...	A	09:57	2,764,075	112,567	
Nebraska	Omaha NE	A	1'00:56	1,768,331	86,339	
Tennessee	Memphis ...	A	00:00	6,038,803	0	
Arkansas	Little R...	A	02:56	2,810,872	33,730	
Oklahoma	Tulsa OK	A	07:41	3,579,212	112,477	
Missouri	St Louis...	A	05:26	5,842,713	129,708	
Iowa	Le Mars ...	A	1'03:10	2,982,085	172,886	
South Dakota	Sioux Fa...	A	1'04:20	781,919	49,026	
Georgia	Atlanta ...	A	07:35	9,363,941	290,750	
Florida	Miami FL	A	1'08:41	18,089,888	1,457,140	
Alabama	Huntsvil...	A	04:28	4,599,030	84,162	
Mississippi	Jackson ...	A	03:11	2,910,540	37,983	
Louisiana	Baton Ro...	A	07:28	4,287,768	130,884	
Texas	Dallas T...	A	09:29	23,507,783	911,514	
TOTAL (Outbound)		0	89,326,960	3,609,166	1,362,61	
SITE LOCATION ~ Allentown PA						
§ US Supply Inc.	A	1.2	35,335,955	132,757		
§ Mega Parts Inc.	A	3.4	70,671,910	463,184		
TOTAL (Inbound)		0	106,007,865	595,941		
© Greater Lehigh Valley East						
New York	New York...	A	01:44	19,306,183	137,557	
Virginia	RICHMOND...	A	05:20	7,642,884	166,806	
West Virginia	Martinsb...	A	03:24	1,818,470	25,368	
Maryland	Baltimor...	A	02:22	5,615,727	54,332	
New Jersey	Asbury P...	A	01:46	8,724,560	63,471	
Pennsylvania	Altoona ...	A	03:32	12,440,621	180,078	
Delaware	Wilmington	A	01:21	853,476	4,737	
Massachusetts	Boston M...	A	05:45	6,437,193	151,596	
Rhode Island	Providen...	A	05:05	1,067,610	22,180	
New Hampshire	Manchest...	A	05:55	1,314,895	31,853	
Maine	Bangor M...	A	10:02	1,321,574	54,218	
Vermont	Brattleb...	A	04:46	623,908	12,166	
Connecticut	Bridgepo...	A	02:48	3,504,809	39,955	
TOTAL (Outbound)		0	70,671,910	944,317	1,593,85	
SITE LOCATION ~ Las Vegas NV						
§ US Supply Inc.	A	4.5	33,700,046	325,677		
§ Mega Parts Inc.	A	2.7	67,400,092	355,603		
SUMMARY TOTALS: (Quantity)						
			296,861,403	11,538,164	6,784,600	18,322,764

Alt. Sites

Msg: Run Logix Supply Chain Optimization for Optimum Cost and Service Level.

Google Maps showing a map of the Northeast United States, highlighting the location of Allentown, PA. The map includes major highways and surrounding cities like New York, Philadelphia, and Trenton.

Site Statistics for Allentown PA:

Product	Capacity	ThruPut	InvTurns	Util%
A	300,000	70,664	1	23.55%
B		0	-	-
C		0	-	-
D		0	-	-
E	300,000	0	-	-

Optimum Site Location: ~ 10 mi. S 33 mi. E of Allentown PA. 40.46, -74.9767

Site Statistics:

Item	Value
Fixed Whs \$	1,290,000
Var Whs \$	303,855
Inv Cost \$	-
OutbTrans \$	901,005
Customers #	13





# Logix® Distribution Network Design

ProLogix v8.1 - Viewing \Demo

Home Project Edit Data View Reports Tools Solve Help Search (Ctrl+F)

Scenarios ...

Starting DCs Cross Dock Cap Limits Greenfield Drop Ship Opt In/Out Proximity Source Opt Depot Opt Split Loads Parameters RLS Options

Model Parameters

Number of Sites: 3 Svc Radius: % Region Filter: Product Filter: Groups 1-5 Model Options: Greenfield Quantities Zip 5 Dist Rates? Detail Invtory\$ LTL ON All Sites LTL ON

Site Name Region A B C D E

MODEL PARAMETERS \* DEFAULTS (Annual) Quantity Population

SUPPLIERS & PLANTS US Supply Inc. \* ALL ✓ Mega Parts Inc. ✓

DISTRIBUTION CENTERS

Chicagoqland Hudson Valley NY MWest ✓

Greenfield

Summary Totals: (Quantity) 296,861,403 296,861,403

Details Clear Delete x--x

Msg: Turn Greenfield option ON or OFF.

Chicagoqland Chicago, IL 60431 Select and Save

Capacity\* Population B C D E

Var (\$/m) 4.90 0 0 0 0

Trans (\$/mi.) 0.0075 0 0 0 0

Trans (\$) 0 0 0 0 0

Svc Radius 0 0 0 0 0

Region: MWest Min-MaxCap\* 300000

Lat/Long: 41.4824 -88.0791

Mode: Road

Map Details Close Delete Save

26.2%

Legend: < 1 day (Green), > 1 day (Blue)



# Logix® Transport and Route Optimization

ProLogix v8.1 - Viewing \Routing and Scheduling

Home Project Edit Data View Reports Tools Solve Help

Transport ....

Site Name Region A B

MODEL PARAMETERS  
DEFAULTS (Daily)

Quantity A

[+] DISTRIBUTION CENTERS ...  
\* ATLANTIC DIVISION DEPOT AC ✓  
\* MIDWEST DIVISION DEPOT CE ✓  
\* SOUTHEAST DIVISION DEPOT SE ✓

[+] CUSTOMERS & MARKETS ...  
JACKSONVILLE\_FL Jacksonville... SE 3,003  
KNOXVILLE\_TN Knoxville... AC 9,397  
TUCKER\_GA Tucker G... AC 8,543  
BURLINGTON\_NC Burlington... SE 726  
TAMPA\_FL Tampa FL SE 9,288  
NASHVILLE\_TN Nashville... CE 672  
WILSON\_NC Wilson N... AC 7,411  
MEMPHIS\_TN Memphis CE 169  
HALETHORPE\_MD HALETHOR... AC 2,197  
FORT MYERS\_FL FORT MYE... SE 6,733  
AUSTIN\_TX Austin T... CE 3,792  
HOUSTON\_TX Houston CE 9,542  
MAULDIN\_SC Mauldin ... AC 8,123  
ORLANDO\_FL Orlando ... SE 3,870  
SAN ANGELO\_TX San Ange... CE 4,643  
CULLMAN\_AL Cullman ... CE 1,997  
THEODORE\_AL Theodore ... CE 5,298  
ARDEN\_NC Arden NC AC 4,613  
EDGEWOOD\_NY Edgewood... AC 7,846  
RICHMOND\_VA Richmond... AC 4,970  
PENSACOLA\_FL Pensacol... SE 5,272  
SAVANNAH\_GA Savannah... SE 435  
BIRMINGHAM\_AL Birmingh... CE 5,673  
ROANOKE\_VA Roanoke ... AC 3,331  
FRANKLIN\_MA Franklin... AC 858  
CORPUS CHRISTI\_TX Corpus C... CE 7,739  
PINEY FLATS\_TN Piney Fl... AC 4,353  
WYTHEVILLE\_VA Wythevil... AC 9,852  
MANASSAS\_VA Manassas... AC 3,358  
RALEIGH\_NC Raleigh ... AC 8,423  
FAYETTEVILLE\_NC Fayettev... AC 1,283  
BATON ROUGE\_LA Baton Ro... CE 4,088  
CHARLESTON\_SC Charlest... AC 9,521  
BYRON\_GA Byron GA SE 6,216  
COLORADO\_SPRINGS\_CO Colorado... CE 8,083  
COLUMBIA\_SC Columbia... AC 9,681  
CLINTON\_PA Clinton ... AC 5,090  
NORFOLK\_VA Norfolk ... AC 8,562  
SALISBURY\_MD Salisbur... AC 3,667  
WESTAMPTON\_NJ Westampt... AC 9,944  
RURAL HALL\_NC Rural Ha... AC 2,327  
ROCHESTER\_NY Rocheste... AC 1,229  
WILMINGTON\_NC Wilmingt... AC 1,570  
POCA\_WV Pocca WV AC 5,103  
KENNESAW\_GA Kennesaw... AC 8,275  
ELLENWOOD\_GA ELLENWOO... AC 928  
HARRISONBURG\_VA Harrison... AC 4,425

Model Parameters  
3 Number of Sites  
Svc Radius % 100  
Region Filter  
Product Filter (Groups 1-5)  
Model Results  
3  
\$20,117,454  
Svc Level: 100%  
Baseline  
6  
\$24,208,916  
Svc Level: 100%

SUMMARY TOTALS: (Quantity) 273,144 273,144

Supply Chain Modeler

Suppliers  
Ports and Terminals  
Whses/Pooling Ctr  
DCs/Depots  
Cross Docks  
Intermodal/Transit  
Vehicles\*  
Customers/Stops

SUPPLY CHAIN MODEL ENTITIES:  
o Suppliers: 0  
o Ports and Terminals: 0  
o Whses/Pooling Centers: 0  
o Distribution Centers: 3  
o Cross Docks: 0  
o Intermodal Facilities: 0  
o Vehicles: 1  
o Customers/Stops: 59

Maps Modeler > Refresh Close

Map Satellite

Google

Keyboard shortcuts Map data ©2023 Google, INEGI 1000 km Terms of Use





# Logix® Transport and Route Optimization

ProLogix v8.1 - Viewing \Routing and Scheduling

Home Project Edit Data View Reports Tools Solve Help

Transport ....

Site Name Type:Prdt Seq Distance Quantity Trans\$ Whs/Prdt\$ Total\$ ArrTM Dpt TM Route Schedule Messages

SITE LOCATION ~ Lincolnton NC  
@ ATLANTIC DIVISION DEPOT

ATLANTIC D

Rte AT1-1 ATLANTIC DIVISION DEP...  
RURAL\_HALL\_NC

CLINTON\_PA  
WESTAMPTON\_NJ

Rte AT1-3 AT...  
KNOXVILLE...  
TUCKER\_GA...  
BURLINGTON...  
WILSON\_NC

HALETHORP...  
Depot

Rte AT1-4 ATLA...  
POCA\_WV

HARRISONBURG...  
Depot

Rte AT1-5 ATLANTIC D...  
PINEY\_FLATS\_TN  
WYTHEVILLE\_VA  
ROANOKE\_VA

MANASSAS\_VA  
FAYETTEVILLE\_NC  
RALEIGH\_NC

Depot

SUMMARY TOTALS: Rts/ Stps 24/58 26,033 267,872 27,447 27,447 unRtd

Msg: Current Solution is \$ 27,447 .... (Optimum Solution Range is \$ 27,440 to \$ 27,447 at a 99.9% confidence level)

Model Parameters

Number of Sites  
Svc Radius # % 100  
Region Filter  
Product Filter (Groups 1-5)

Model Results

\$27,447  
Svc Level #  
Baseline

\$24,208,916  
Svc Level: 100%

Analytics Alt. Sites

Transport ....

Show Data Opt Fleet

Sim Routes Opt Routes

Site Name Type:Prdt Seq Distance Quantity Trans\$ Whs/Prdt\$ Total\$ ArrTM Dpt TM Route Schedule Messages

SITE LOCATION ~ Lincolnton NC  
@ ATLANTIC DIVISION DEPOT

ATLANTIC D

Rte AT1-1 ATLANTIC DIVISION DEP...  
RURAL\_HALL\_NC

CLINTON\_PA  
WESTAMPTON\_NJ

Rte AT1-3 AT...  
KNOXVILLE...  
TUCKER\_GA...  
BURLINGTON...  
WILSON\_NC

HALETHORP...  
Depot

Rte AT1-4 ATLA...  
POCA\_WV

HARRISONBURG...  
Depot

Rte AT1-5 ATLANTIC D...  
PINEY\_FLATS\_TN  
WYTHEVILLE\_VA  
ROANOKE\_VA

MANASSAS\_VA  
FAYETTEVILLE\_NC  
RALEIGH\_NC

Depot

SUMMARY TOTALS: Rts/ Stps 24/58 26,033 267,872 27,447 27,447 unRtd

Msg: Current Solution is \$ 27,447 .... (Optimum Solution Range is \$ 27,440 to \$ 27,447 at a 99.9% confidence level)

Model Parameters

Number of Sites  
Svc Radius # % 100  
Region Filter  
Product Filter (Groups 1-5)

Model Results

\$27,447  
Svc Level #  
Baseline

\$24,208,916  
Svc Level: 100%

Analytics Alt. Sites





# Logix® Transport and Route Optimization

ProLogix v8.1 - Viewing \Routing and Scheduling

Home Project Edit Data View Reports Tools Solve Help

Transport ....

Site Name Type:Prdt Seq Distance Quantity Trans\$ Whs/Prdt\$ Total\$ ArrTM Dpt TM Route Schedule Messages

SITE LOCATION ~ Lincolnnton NC  
@ ATLANTIC DIVISION DEPOT

Rte AT1-1 ATLANTIC DIVISION DEP...  
RURAL\_HALL\_NC  
CLINTON\_PA  
WESTAMPTON\_NJ  
NORFOLK\_VA  
SALISBURY\_MD  
FRANKLIN\_MA  
Depot  
---- Total ----

Rte AT1-2 ATLANTIC DIVISION DEP...  
CHARLOTTE\_NC  
CHARLOTTE\_NC  
FLORENCE\_SC  
AUGUSTA\_GA  
KENNESAW\_GA  
ELLENWOOD\_GA  
Depot  
---- Total ----

Rte AT1-3 ATLANTIC DIVISION DEP...  
KNOXVILLE\_TN  
TUCKER\_GA  
BURLINGTON\_NC  
WILSON\_NC  
HALETHORPE\_MD  
Depot  
---- Total ----

Rte AT1-4 ATLANTIC DIVISION DEP...  
POCA\_WV  
HARRISONBURG\_VA  
Depot  
---- Total ----

Rte AT1-5 ATLANTIC DIVISION DEP...  
PINEY\_FLATS\_TN  
WYTHEVILLE\_VA  
ROANKE\_VA  
MANASSAS\_VA  
FAYETTEVILLE\_NC  
RALEIGH\_NC  
Depot  
---- Total ----

SUMMARY TOTALS: Rts/ Stps 24/58 26,033 267,872 27,447 27,447 unRtd

Msg: Current Solution is \$ 27,447 .... (Optimum Solution Range is \$ 27,440 to \$ 27,447 at a 99.9% confidence level)

Model Parameters

3 Number of Sites  
Svc Radius # % 100  
Region Filter  
Product Filter (Groups 1-5)

Model Results

\$27,447  
Svc Level #  
Baseline

\$24,208,916  
Svc Level 100%

Analytics Alt. Sites



# Logix® Transport and Route Optimization

ProLogix v8.1 - Viewing \Routing and Scheduling

Home Project Edit Data View Reports Tools Solve Help

Transport ....

Site Name Type:Prdt Seq Distance Quantity Trans\$ Whs/Prdt\$ Total\$

SITE LOCATION ~ Lincolnton NC  
@ ATLANTIC DIVISION DEPOT ATLANTIC D

Rte AT1-1 ATLANTIC DIVISION DEP...  
RURAL\_HALL\_NC PU:A B 92.1 2,327  
CLINTON\_PA PU:A C 363 5,090  
WESTAMPTON\_NJ DL:A D 362 9,944  
NORFOLK\_VA DL:A E 283 8,562  
SALISBURY\_MD PU:A F 136 3,667  
FRANKLIN\_MA PU:A G 415 858  
Depot H 859  
---- Total ---- 2,510 30,448 5,166 5,166

Rte AT1-2 ATLANTIC DIVISION DEP...  
CHARLOTTE\_NC PU:A A 28.9 2,330  
CHARLOTTE\_NC DL:A C 4.4 2,298  
FLORENCE\_SC DL:A D 120 2,144  
AUGUSTA\_GA DL:A E 180 4,657  
KENNESAW\_GA PU:A F 185 275  
ELLENWOOD\_GA BH:A G 24.1 928  
Depot H 242  
---- Total ---- 785 12,632 817 817

Rte AT1-3 ATLANTIC DIVISION DEP...  
KNOXVILLE\_TN PU:A A 194 97  
TUCKER\_GA DL:A C 184 8,543  
BURLINGTON\_NC PU:A D 381 726  
WILSON\_NC DL:A E 113 7,411  
HALETHORPE\_MD PU:A F 306 2,197  
Depot BH:A G 441  
---- Total ---- 1,618 18,974 2,269 2,269

Rte AT1-4 ATLANTIC DIVISION DEP...  
POCA\_WV DL:A A 260 5,103  
HARRISONBURG\_VA PU:A C 194 4,425  
Depot D 299  
---- Total ---- 753 9,528 649 649

Rte AT1-5 ATLANTIC DIVISION DEP...  
PINEY\_FLATS\_TN PU:A A 110 4,353  
WYTHEVILLE\_VA DL:A B 97.9 9,852  
ROANOKE\_VA DL:A D 81.2 3,331  
MANASSAS\_VA PU:A E 221 3,358  
FAYETTEVILLE\_NC PU:A F 364 1,283  
RALEIGH\_NC DL:A G 62.7 8,423  
Depot H 183  
---- Total ---- 1,100 30,600 7,333 7,333

SUMMARY TOTALS: Rts/ Stps 24/58 26,033 267,872 27,447 27,447

Model Parameters  
3 Number of Sites  
Svc Radius # % 100  
Region Filter  
A B C D E Product Filter  
Groups 1-5

Model Results  
3  
\$27,447  
Svc Level #  
Baseline  
\$24,208,916  
Svc Level: 100%

Analytics Details Clear Delete x-x Alt. Sites

Msg: Current Solution is \$ 27,447 .... (Optimum Solution Range is \$ 27,440 to \$ 27,447 at a 99.9% confidence level)

Google Maps

File | C:/LSTemp/... ☆

Washington  
Louisville Lexington WEST VIRGINIA Charlottesville Richmond Norfolk  
KENTUCKY VIRGINIA  
shville Knoxville Asheville Greensboro Durham  
NESSEE Pigeon Forge Chattanooga  
Chattanooga  
tuntsville  
Atlanta  
SOUTH CAROLINA Myrtle Beach  
Wilmington  
ABAMA GEORGIA Charleston Savannah  
Montgomery  
Tallahassee Jacksonville  
Panama City St. Augustine  
Orlando

Google Keyboard shortcuts Map data ©2023 Google, INEGI 100 km Terms of Use





# Logix® Transport and Route Optimization

ProLogix v8.1 - Viewing \Routing and Scheduling

Home Project Edit Data View Reports Tools Solve Help

Transport ....

Show Data Opt Fleet  
Sim Routes Opt Routes  
Schedule Modeler  
Insert Rte Opt Rates  
Summary Detail  
Parameters Opt Tour

Model Parameters  
3 Number of Sites  
Svc Radius # 100  
Region Filter  
A B C D E F Product Filter (Groups 1-5)

Model Results  
\$27,447  
Svc Level #  
Baseline  
\$24,208,916  
Svc Level: 100%

Site Name	Type	Prdt	Seq	Distance
SITE LOCATION ~ Lincolnton NC @ ATLANTIC DIVISION DEPOT				
Rte AT1-1 ATLANTIC DIVISION DEP...	PU:A	B		92.1
RURAL_HALL_NC	DL:A	C		363
CLINTON_PA	DL:A	D		362
NORFOLK_VA	DL:A	E		283
SALISBURY_MD	PU:A	F		136
FRANKLIN_MA	PU:A	G		415
Depot		H		859
---- Total ----				2,510
Rte AT1-2 ATLANTIC DIVISION DEP...				
CHARLOTTE_NC	PU:A	A		28.9
CHARLOTTE_NC	DL:A	C		4.4
FLORENCE_SC	DL:A	D		120
AUGUSTA_GA	DL:A	E		180
KENNESAW_GA	PU:A	F		185
ELLENWOOD_GA	BH:A	G		24.1
Depot		H		242
---- Total ----				785
Rte AT1-3 ATLANTIC DIVISION DEP...				
KNOXVILLE_TN	PU:A	A		194
TUCKER_GA	DL:A	B		184
BURLINGTON_NC	PU:A	C		381
WILSON_NC	DL:A	D		113
HALETHORPE_MD	BH:A	F		306
Depot		G		441
---- Total ----				1,618
Rte AT1-4 ATLANTIC DIVISION DEP...				
POCA_WV	DL:A	A		260
HARRISONBURG_VA	PU:A	C		194
Depot		D		299
---- Total ----				753
Rte AT1-5 ATLANTIC DIVISION DEP...				
PINEY_FLATS_TN	PU:A	A		110
WYTHEVILLE_VA	DL:A	B		97.9
ROANOKE_VA	DL:A	C		81.2
MANASSAS_VA	PU:A	E		221
FAYETTEVILLE_NC	PU:A	F		364
RALEIGH_NC	DL:A	G		62.7
Depot		H		183
---- Total ----				1,100
SUMMARY TOTALS: Rts/ Stps 24/58 26,033				

Draggable Directions

Map Satellite

File | C:/LSTemp/MapFile.html

Total Distance: 767.64 mi.

Lincolnton, NC 28092, USA

37.4 mi. About 46 mins

1. Head southwest on E Pine St toward N Poplar St 0.2 mi
2. Turn left onto N Aspen St 292 ft
3. Turn right onto Court Square 0.1 mi
4. Turn right onto S Aspen St 1.5 mi  
Pass by Bank of America  
(with Drive-thru services) (on the left)
5. Continue onto US-321 BUS S 3.3 mi
6. Turn right onto the ramp to 0.3 mi

Welcome to the Logix Supply Chain Optimization Walkthrough.docx - Word

Welcome to the Logix Supply Chain Optimization Walkthrough.docx - Word





# Logix® vs ProLogix AI™ Versions

Demo vs Standard or ProLogix Versions	Demo	Standard	ProLogix
o Maximum Distribution Centers:	16	250	500
o Maximum Customers/Demand:	100	2500	Unlimited
o Maximum Product Categories:	1	5	25
o Maximum Products/SKUs:	1	2500	Unlimited
o Maximum Freight Rates:	5	2500	5000
o 3-Digit ZipCode Geocoding vs 5-Digit and International Geocoding			
o Single Service Radius vs DC Specific Service Radius by Product Category			
o General Freight Rates (incl. Regional, Zip, Mileage, Land) vs LTL Freight Rates			
o No Excel Data Import - Demo Data and Screen-Based Data Entry/Edit			
o No Simulation and Optimization Solution Export			
o No RLS (Reverse Location Selection) Modeling			
o No MicroSoft MapPoint Interface (Google Maps are standard)			





## Schedule a Live Demo Presentation, or Download the Free Version of Logix.

For more information on the Logistix Solutions suite of products, visit our website at [www.logistixsolutions.com](http://www.logistixsolutions.com), contact Logistix Solutions at 571.426.5951, or e-mail [info@LogistixSolutions.com](mailto:info@LogistixSolutions.com).